



# LV STREAM

REVOLUTIONISING BAGGAGE INSPECTION  
WITH HIGH SPEED, ADVANCED AI  
AND X-RAY TECHNOLOGY



## KEY FEATURES

High-speed throughput - 1300+ bags per hour

AI-powered weapons and threat detection

Auto-start inspection

Dual View X-Ray technology

No need for highly skilled image analysis

Venue proven - real world tested

Our cutting-edge bag inspection system combines advanced AI-powered software with state-of-the-art hardware to deliver unparalleled efficiency and accuracy. Capable of processing 1300+ bags per hour at an impressive speed of 0,7 meters per second, our system ensures rapid throughput without compromising on security. The AI algorithms precisely detect and sort suspected bags automatically, providing comprehensive threat detection for various types of weapons, as well as suspicious high mass objects (potential IEDs). Designed for easy installation and mobility, this system adapts seamlessly to high-traffic venues, stadiums, buildings, schools, museums and other public spaces. Experience a revolutionary safeguarding solution that balances top-tier security with a welcoming atmosphere, offering peace of mind in the face of evolving security challenges.

This system can be operated by a regular security or concierge staff eliminating the need for a trained specialist. No extensive training or time-consuming image analysis is required, allowing operators to start using the system immediately. This reduces training costs and ensures quick deployment, providing high-level security without complex settings or operator intervention, making it ideal for high-traffic venues.



# LV STREAM

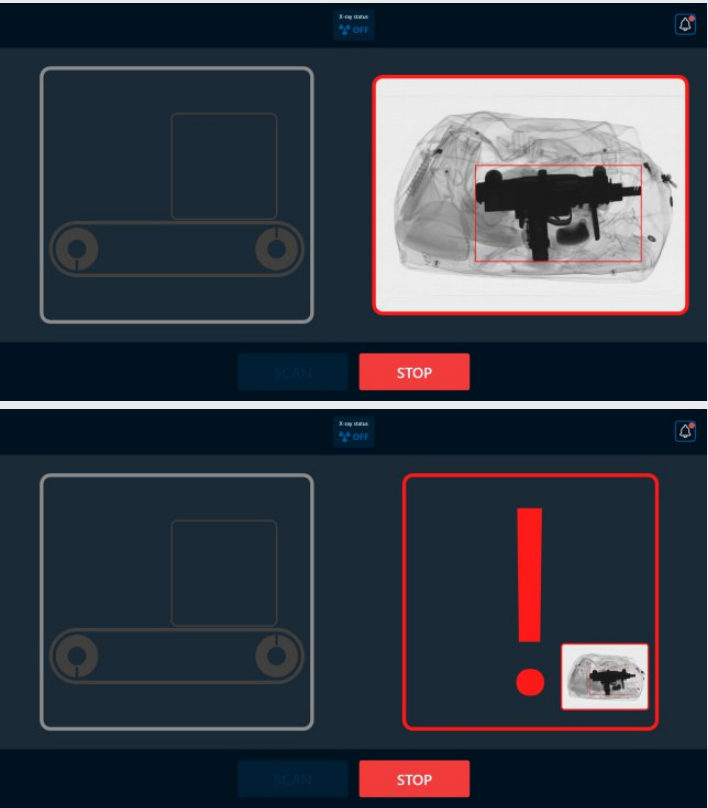
## EXPERIENCE THE CUTTING-EDGE SOLUTION FOR HIGH-TRAFFIC VENUES, STADIUMS, BUILDINGS, SCHOOLS, AND OTHER PUBLIC SPACES

- **Unmatched Speed and Efficiency:** Process over 1300 bags per hour at an unparalleled 0.7 meters per second, redefining efficiency in security screening.
- **AI-Powered Precision:** Utilise advanced AI for accurate inspection and automatic sorting of suspect bags.
- **Easy Installation and Mobility:** Sleek, easy-to-install design for quick setup and relocation at any event.
- **Comprehensive Threat Detection:** Detect both metallic and non-metallic threats in bags, ensuring maximum safety for all attendees.
- **Enhanced Visitor Experience:** Balance top-tier security with a welcoming atmosphere, reducing inconvenience and maintaining a positive visitor experience.
- **Revolutionary Safeguarding:** Upgrade your security infrastructure and embrace innovation, ushering in a new era of safety where every scan is a step towards a secure future.

Upgrade your security framework by leveraging the latest in AI and X-Ray technology. Embrace the innovations that enable high-speed, accurate inspections, ensuring comprehensive protection. Every scan is a testament to your commitment to safety and progress. Welcome to a new era where security is seamlessly integrated into everyday operations, providing unmatched assurance and peace of mind for all visitors and staff.

### GENERAL SPECIFICATIONS

DIMENSIONS	
TUNNEL DIMENSIONS	
width	520 mm [20.4 in]
height	310 mm [12.2 in]
OVERALL DIMENSIONS (MAX)	
width	745 mm [29.3 in]
height	1175 mm [46.3 in]
length (without roller tables)	2965 mm [116.7 in]
High speed throughput - 1300+ bags per hour	
AI-powered detection	



- KNIVES
- AMMO
- FIREARMS AND THEIR PARTS
- MASS CASUALTY THREAT ITEMS

